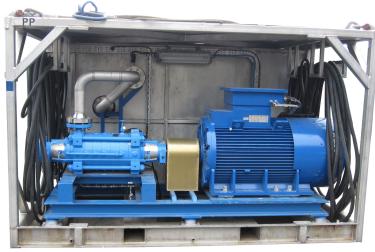


Unit no. PP-63



**PUMP FOR PIGGING / CHEMICAL CLEANING**

**Dimensions**

Length(mm).....:	3650	Width(mm).....:	2450	Height(mm).....:	2200
Weight (kg).....:	9000				
Lifting/ Transportation.....:	Frame with forklift pockets and lifting. DNV 2.7-1				
	Ref. cert. Frame: 1117783 / PP-6				

**Construction year**

Built.....: 2012

**Area of use / certification**

Onshore/offshore.....:	Offshore
Standard.....:	Offshore Rig Safe, According to Norsok Z-015 Zone 1
Power (Electrical/Diesel).....:	Electrical

**Flow / Pressure / Volume**

Hz v Q-max measure.....:	60	Q-max (l/min).....:	2600
Hz v P-max measure.....:	60	P-max (bar).....:	68
Flowrate1.....:	1850 ltr/min @ 68 bar (Q-min)		
Flowrate2.....:	2833 ltr/min @ 61 bar (BEP)		
Flowrate3.....:	2600 ltr/min @ 62 bar (Design Pressure)		

**Connections**

Inlet connection.....:	6"x150# RF (Minimum delivery pressure: With pump 2 bar, with tank 0,5bar)
Outlet connection.....:	Outlet coupling: 4" 600# RF
	Bleed coupling: 4" 600# RF

**Pump(s)**

Pump1 (type).....: Garbarino 100GHA-6  
 Pump1 (Cert. No.).....: 709687

**Motor / Engine(s)**

Motor1 (type).....: ATB BDL 400L-2A  
 Cert.No: PTB 09ATEX 1015 X  
 Motor1 (Cert. No.).....: 51949002

**Power supply**

Fuse (qty).....:	1	Fuse (A).....:	2500
EI.Power1.....:	400-690 V	(Hz).....:	50/60
		(kW).....:	
		(A).....:	2500
Starter.....:	BARTEC TECHNOR (Ser.No: 12-002)		
	DNV-2003-OSL-ATEX-0028 /TEC-12-ATEX-1107238-A		

**Additional information**

- Equipment / Functions.....: EL. POWER:
- Cable size Main power:
  - 1- P – 001 1 x 400 mm<sup>2</sup>
  - P – 002 1 x 400 mm<sup>2</sup>
  - P – 003 1 x 400 mm<sup>2</sup>
  - P – 004 1 x 240 mm<sup>2</sup>
- 
- Rec. electrical protection: 2500A
  - Rec. aggregate: Min 1500 KVA
- 
- Purge air control cabinet : The air should have instrument air quality and should not under any circumstances have more than 15 degrees Celsius.
  - Strainer Element: MODENTIC SS304 (37-400 micron) DN150 6"
  - Flowmeter, Light, Pressure Transmitter, Y-strainer, Pressure Cabinets