



## SKIPAVIKA TERMINAL

### IKM MOORING SERVICES AS SUPPLY BASE



IKM Mooring Services offshore supply base is located at Skipavika across the fjord from Mongstad. This is a brand new location and tailored for mobilisation & demobilisation of mooring equipment. IKM is located in southern part of base and quays are shaped and tailored for our operations. IKM have a first priority to quays and our building and outdoor storage area are only 50 mtr from quayside.



IKM Mooring's new building. Ready December 2014



Skipavika offshore supply base



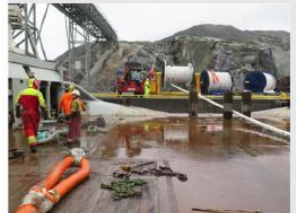
Storage of chain and anchors at quayside



Above, storage of wire rope on drums, to right offloading new anchors from Vryhof and below storage of 76mm and 84mm R5 studlink chain



Mobilisation of buoyancy using 50 ton stacker



Spooling of Fibre Mooring Rope from quay to vessel



Location/SoC

Latitude: 60° 51'19.87" N  
 Longitude: 5° 24.58" E  
 IMO Port: GULEN (NOGUL)  
 IMO Port facility name: SKIPAVIKA HAVNEANLEGG  
 IMO Port facility number: NOGUL-0010  
 Security level = 1.

## Base weather condition limitation and size etc

Skipavika have the most sheltered quay facilities in Fensfjord. The base is not exposed to any swell or wind from any direction.

There are currently 8 quays at Skipavika. IKM have first priority to quay no. 0 and quay no. 1. Table below gives some details for all quays at Skipavika.

\*\* Quay is planned to be extended to 60 mtr length

## Base Facilities and Personnel

IKM have a Base Manager at Skipavika in a 100% position. During a mob and/or demob operation there will always be additional IKM personnel present.

Quay no.	Length mtr	Water depth mtr	ISPS status	Quay surface strength	Bollards in tonn
0	32 **	11	Approved	80 mt/m2	50/70/200
1	50	16	Approved	80 mt/m2	50/70/200
2	43	17	Approved	80 mt/m2	50/70/200
3	15	25	Approved	80 mt/m2	50/70/200
2+3	140	17	Approved	80 mt/m2	50/70/200
4	50	29	Approved	80 mt/m2	50/70/200/300
4B	34	25	Approved	80 mt/m2	50/70/200
6	43	25	Approved	80 mt/m2	50/70/200/300